



DOMINO SPC

THE MOST DURABLE VINYL FLOOR



DOMINO SPC



GRABO

DOMINO SPC

THE MOST DURABLE VINYL FLOOR

A new perspective will be opened in the area of vinyl floorcoverings, Graboplast's new SPC floor is the best choice for your home!

The big advantage of Grabo Domino SPC flooring is its rigid core, which due to its composition (Stone Polymer Composite) is much more durable and stable than traditional click floorings. Provides perfect visual experience in appearance and due to its water resistance **it can be used in any room** of your home. Made from environmentally friendly ingredients, **the installation of Grabo Domino SPC is extremely simple** thanks to the back foaming and click form.



VERY SIMPLE RENOVATION

Renovation has never been easier, almost anyone can lay Grabo Domino SPC click flooring and thanks to the foam backing of the product does not require a perfect subfloor. It can also be installed on old coverings.

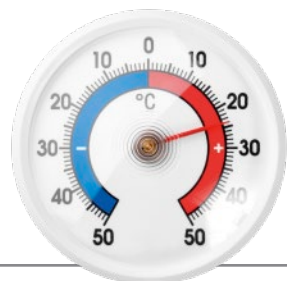
IDEAL FOR KIDS AND PETS

Don't worry about damages, your floor will resist even the effects caused by children and pets.



100% WATERPROOF

No problem with water spills or frequent mopping, can be used in any room of the apartment without any trouble.



EXCELLENT DIMENSIONAL STABILITY

Resistant to cold and heat, humidity changes are not a problem either.

ENVIRONMENTALLY FRIENDLY

The product is made from renewable raw materials and 100% recyclable, therefore, using it results in a lower carbon footprint.



LOW RESIDUAL INDENTATION

Even after a long time, no impact of heavy furnitures can be seen.

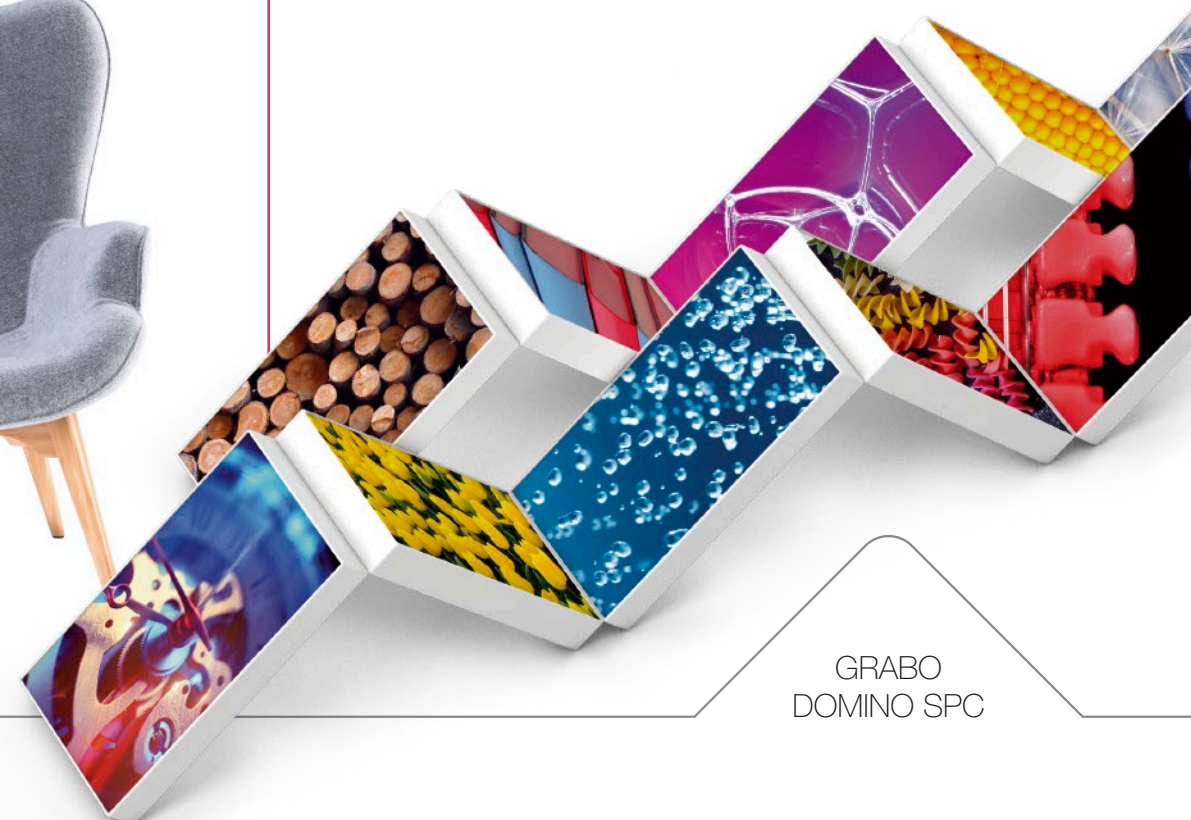


COMFORT

Reduces the noise of the steps to provide optimum internal sound insulation.

EASY CLEANING

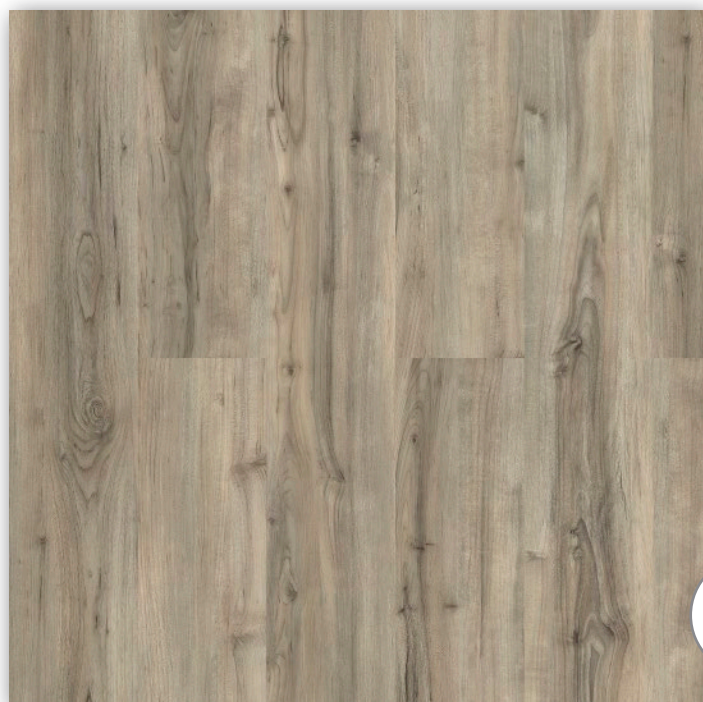
The floor is easy to clean, resistant to stains and chemicals as well.



GRABO
DOMINO SPC



DOMINO SPC
BRONN



1:10



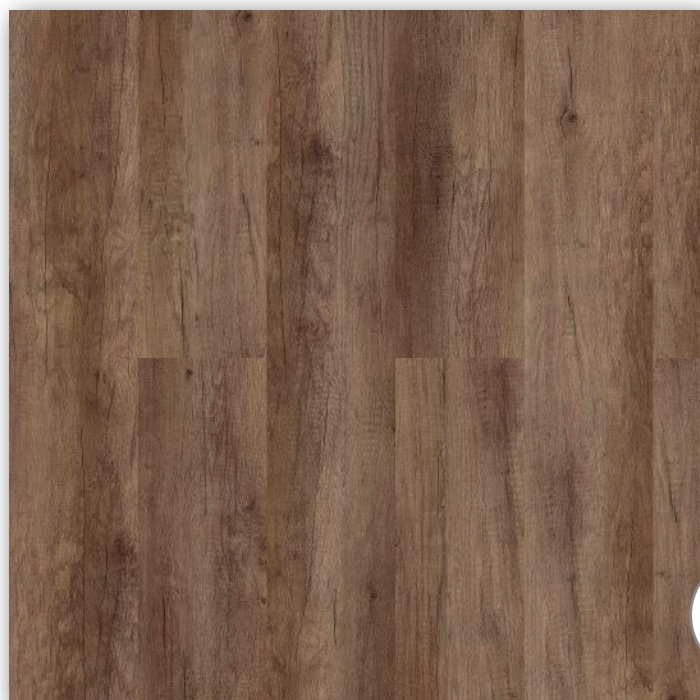
1:2



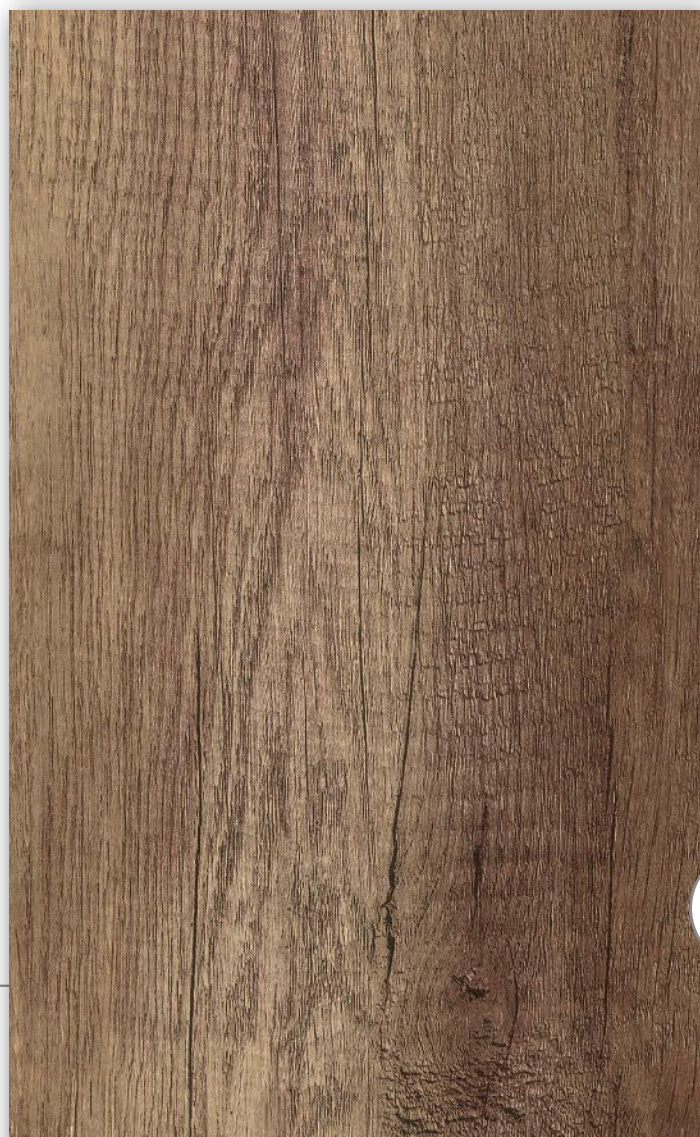
GRABO
DOMINO SPC



DOMINO SPC
DAVOS



1:10



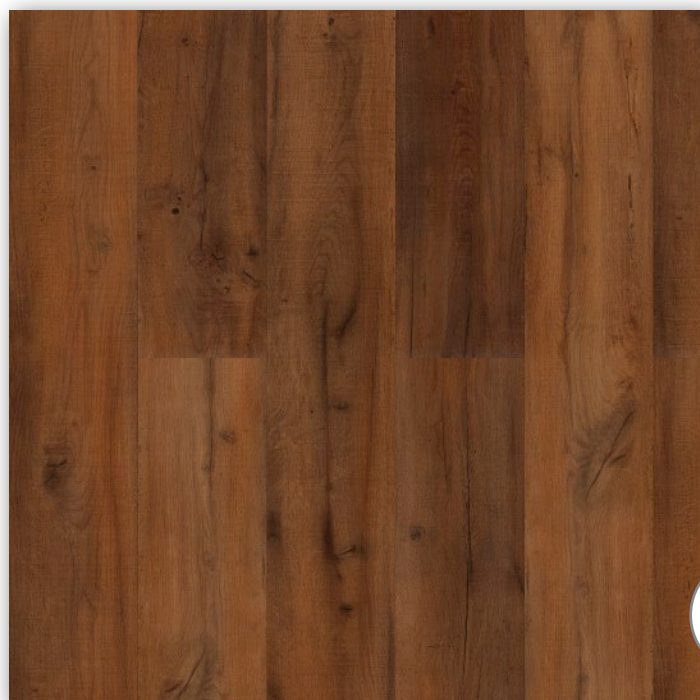
1:2



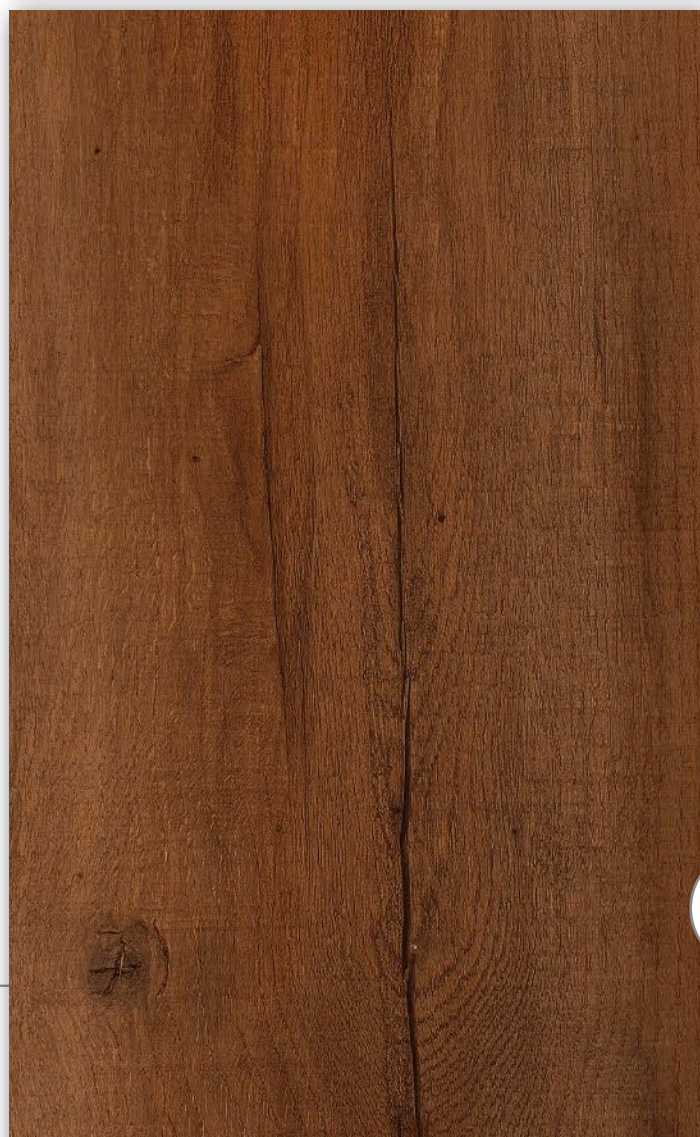
GRABO
DOMINO SPC



DOMINO SPC
ELERIA



1:10



1:2



GRABO
DOMINO SPC



DOMINO SPC
LANNISTER



1:10



1:2



GRABO
DOMINO SPC



DOMINO SPC
OLENA



1:10



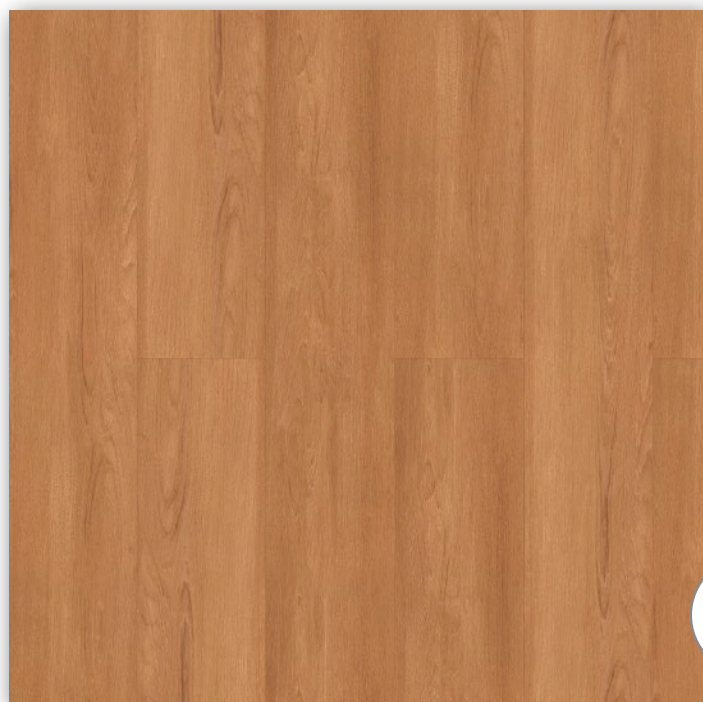
1:2



GRABO
DOMINO SPC



DOMINO SPC
SANSA



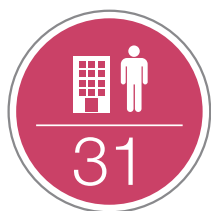
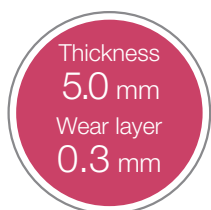
1:10



1:2



GRABO
DOMINO SPC



100%

WATER
RESISTANT



PHTHALATE
FREE

GRABO DOMINO SPC

SPECIFICATION

CONSTRUCTION	SPC Luxury floor with click	
PLANK SIZE	EN ISO 24341	177,8×1219,2 mm
	EN ISO 24341	7×48 inch
THICKNESS	EN ISO 24346	5.0 mm
WEAR LAYER	EN ISO 24340	0.3 mm
TOTAL WEIGHT	EN ISO 23997	7.9 kg/m ²

CLASSIFICATION

BINDER CONTENT	EN ISO 10582	Type I.
EUROPEAN CLASSIFICATION	EN ISO 10582	class: 23/31
RESIDUAL INDENTATION <small>REQUIREMENT</small>	EN ISO 24343	max. 0.1 mm
RESIDUAL INDENTATION <small>MEASURED VALUE</small>	EN ISO 24343	max. 0.03 mm
DIMENSIONAL STABILITY	EN ISO 23999	max. 0.15 %
CURLING	EN ISO 23999	max. 2 mm

PERFORMANCE

ABRASION GROUP	MSZ EN 660-1	class: T
FIRE RESISTANCE	EN 13501-1	class: Bfl-s1
SLIP RESISTANCE	EN 13893	DS
	DIN 51130	R10
LIGHT FASTNESS	EN ISO 105-B0	grade 6
CHEMICAL RESISTANCE	EN ISO 26987	✓
HYGENIE		✓
ENVIRONMENTAL ATTRIBUTES	solvent and phthalate free	
SURFACE TREATMENT	iGuard PUR Surface	
CONTENT OF PCP	EN 12673	does not contain
FORMALDEHIDE EMISSION	ENV 717-1	E1 (no emission)

GRABOPLAST
FLOOR COVERING MANUFACTURERS LTD.
H-9023 Győr, Fehérvári út. 16/b. Phone: (+36) 96 506-100
www.graboplast.com



2019/01



www.facebook.com/graboplast

GRABO
DOMINO SPC