


CONSTRUCTION	Tufting 1/10" saxony	STAIR SUITABILITY	EN 1963
STRUCTURE	Tufté 1/10" saxony	ESCALIERS	A: intensive use
STRUKTUR	Getuftet 1/10" Saxony	TREPPENEIGNUNG	
STRUCTUUR	Getuft 1/10" saxony	TRAPPENGESCHIKTHEID	
PILE MATERIAL	100% PA 6 IMPREL®	PERMANENTLY ANTISTATIC	ISO 6356
COMPOSITION DU VELOURS		ANTISTATIQUE PERMANENT	< 2 kV
POLMATERIAL		PERMANENT ANTISTATISCH	
POOLMATERIAAL		PERMANENT ANTISTATISCH	
PRIMARY BACKING	Non woven PES	IMPACT NOISE RATING	ISO 140-8
SUPPORT	Non woven PES	ISOLATION PHONIQUE	26 dB ΔLw
TRÄGERMATERIAAL	Vlies PES	TRITTSCHALLVERBESSERUNG	
TUFTDOEK	Non woven PES	GELUIDSISOLATIE	
SECONDARY BACKING	Action Back	SOUND ABSORPTION	ISO 354
DOSSIER		ABSORPTION PHONIQUE	0.20 αw
RÜCKEN		SCHALLABSORPTIONSGRAD	
TAPIJTRUG		GELUIDSABSORPTIE	
PILE WEIGHT	Ca. 1.150 gr/m ²	THERMAL RESISTANCE	ISO 8302
POIDS DU VELOURS		RÉSISTANCE THERMIQUE	0.09 m ² K/W
POLEINSATZGEWICHT		WÄRMEDURCHLASSWIDERSTAND	
POOLGEWICHT		WARMTEDOORLAATWEERSTAND	
TOTAL WEIGHT	Ca. 2.020 gr/m ²	FASTNESS TO LIGHT	ISO 105-B02
POIDS TOTAL		SOLIDITÉ A LA LUMIÈRE	≥ 5-6
GESAMTGEWICHT		LICHTECHTHEIT	
TOTAAL GEWICHT		LICHTECHTHEID	
PILE HEIGHT	Ca. 5 mm	COLOUR FASTNESS TO WATER	EN ISO 105-E01
EPAISSEUR DU VELOURS		SOLIDITÉ À L'EAU	≥ 4-5
POLHÖHE		WASSERECHTHEIT	
POOLHOOGTE		WATERECHTHEID	
TOTAL HEIGHT	Ca. 8 mm	FIRE RESISTANCE	EN 13501-1
EPAISSEUR TOTALE		COMPOREMENT AU FEU	Bfl-s1 (if glued) /
GESAMTHÖHE		BRENNVERHALTEN	Cfl-s1
TOTALE DIKTE		BRANDGEDRAG	
TUFT DENSITY	Ca. 209 000/m ²	RUBBING FASTNESS	EN ISO 105-X12
NOMBRES DE POINTS		SOLIDITÉ AU FROTTEMENT	≥ 4
NOPPENZAHL		REIBECHTHEIT	
AANTAL PUNTEN		WRIJFECHTHEID	
PILE DENSITY	Ca. 0.153 g/cm ³	NUMBER OF COLOURS	24
DENSITÉ DU VELOURS		NOMBRES DE COULEURS	
POLROHDICHTE		ANZAHL FARBEN	
POOLDICHTHEID		AANTAL KLEUREN	
CLASSIFICATION	EN 1307	WIDTH	EN ISO 3018
CLASSEMENT	33 - LC4	LARGEUR	ca. 400 cm
KLASSIFIKATION		BREITE	
CLASSIFICATIE		BREEDTE	
UPEC	U3s P3 E1 C0 (col. 33/38 = U3 P3) Certification CSTB:11/286		

CASTOR CHAIR SUITABILITY EN 985
CHAISE À ROULETTES A: intensive use
STUHLROLLENEIGNUNG
ROLSTOELGESCHIKTHEID



EN14041



16

Balta Industries - Kanegem-
 straat 15 - BE 8700 Tielt
DOP: 1011#IE0ABV

Textile Floor Covering EN1307
 Notified body 2401



www.baltamediabank.com



REG. NR
6F7612AC

EMISSIONS DANS L'AIR INTÉRIEUR
A+




moquettes touffées et tissées en lés
<http://evaluation.cstb.fr>

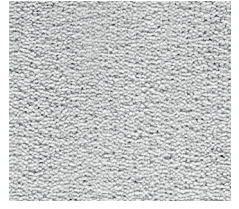
Prominent^{AB}

The Long Play collection

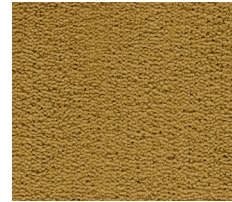
arc edition



▲ 38



▲ 90



▲ 153



▲ 195



▲ 54



▲ 191



▲ 26



▲ 96



▲ 79

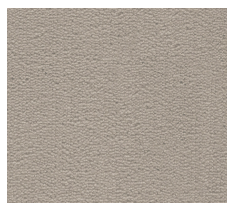


▲ 197

▲ 47



▲ 37



▲ 49



▲ 43



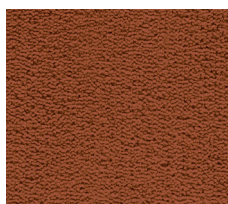
▲ 48



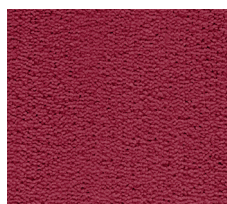
▲ 77



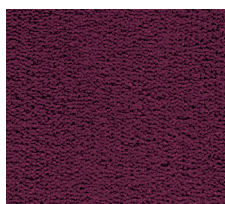
▲ 98



▲ 64



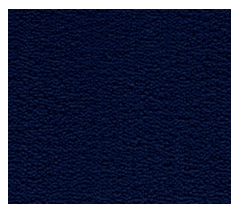
▲ 11



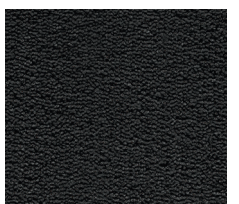
▲ 16



▲ 18



▲ 78



▲ 198